

STAY WELL

CLINIC & PHYSIO

ANTI-AGING SERVICES



DOCTOR CONSULTATION

Anti-aging consultation 30 mins

THB 2,500

BODY COMPOSITION

InBody 370S Body Composition Report Only

THB 600

NUTRITIONIST

Nutritionist Consultation 45 mins

THB 3,400

Including InBody 370S Body Composition Report, analysis and nutritional advices with Certified Nutritionist

Personalized Diet plan 50 - 60 mins

THB 5,900

Tailor-made weekly meal plan ; including InBody 370S Body Composition Report with Certified Nutritionist

The personalized meal plan will be sent via email 1-2 days after the consultation

Nutritionist Follow-up Consultation 30 mins

THB 1,690

Including InBody 370S Body Composition Report

HEALTH CHECK-UP PACKAGES

General

Executive Hormone

F

M

2

Metabolic Function

Complete Blood Count	●	●	●
Electrolyte (Sodium, Potassium, Chloride, Total Co2)			
Glucose Fasting (FBS)	●	●	●
Glycated Hb (HbA1c)	●	●	●
Lipid Profile (Cholesterol, Triglyceride, HDL, LDL)	●		
Fasting Insulin			
Uric Acid	●		
G6PD			
Calcium			
Magnesium			

Kidney Function

Creatinine	●	●	●
Blood Urea Nitrogen (BUN)	●	●	●
Urine Examination	●		

Liver Function

Liver Function Test (Total Protein, Albumin, Globulin, Billirubin (Total), Billirubin (Direct), AST, ALT, ALP)	●	●	●
GGT (Gamma GT)	●	●	●

Hormone

Total Testosterone		●	●
Estradiol		●	●
Progesterone		●	
Free Testosterone			
Luteinizing Hormone (LH)		●	
Follicle Stimulating Hormone (FSH)		●	
Total Vitamin D		●	●
DHEAS			
Cortisol			
Prolactin			●

Cancer Screening

Carcinoembryonic Antigen (CEA)			
Alpha Fetoprotein (AFP)			
CA19-9 (Colon Cancer)			●
CA125 (Ovary Cancer)		●	
CA153 (Breast Cancer)		●	
Prostatic Specific Antigen (PSA)			●

Thyroid Function

Thyroid Stimulating Hormone (TSH)		●	●
Thyroxine Free (Free T4)		●	●
Triiodothyronine Free (Free T3)		●	●

Inflammation

Ferritin			
Homocysteine			
C-Reactive Protein High Sens			

Gut Health

Stool Examination			
Urine Indican			

Growth Hormone

IGF1			
IGFBP3			

Vitamin

Vitamin B12			
Total Vitamin D			

Body Composition InBody scan

Consultation -1 session included

Price THB

3,300

8,500

8,900

HEALTH CHECK-UP PACKAGES	Wellbeing Panel		Wellness grand executive	
	F	M	F	M
Metabolic Function				
Complete Blood Count	●	●	●	●
RH			●	●
Blood Group ABO			●	●
Electrolyte (Sodium, Potassium, Chloride, Total Co2)	●	●	●	●
Glucose Fasting (FBS)	●	●	●	●
Glycated Hb (HbA1c)	●	●	●	●
Lipid Profile (Cholesterol, Triglyceride, HDL, LDL)	●	●	●	●
Fasting Insulin	●	●	●	●
Uric Acid	●	●	●	●
G6PD	●	●	●	●
Calcium			●	●
Magnesium			●	●
Kidney Function				
Creatinine	●	●	●	●
Blood Urea Nitrogen (BUN)	●	●	●	●
Urine Examination	●	●	●	●
Liver Function				
Liver Function Test <i>(Total Protein, Albumin, Globulin, Billirubin (Total), Billirubin (Direct), AST, ALT, ALP)</i>	●	●	●	●
GGT (Gamma GT)	●	●	●	●
Hormone				
Total Testosterone	●		●	●
Estradiol	●	●	●	●
Progesterone	●		●	
Free Testosterone		●		●
Luteinizing Hormone (LH)	●		●	●
Follicle Stimulating Hormone (FSH)	●		●	●
Total Vitamin D	●	●	●	●
DHEAS	●	●	●	●
Cortisol	●	●	●	●
Prolactin	●			●
Cancer Screening				
Carcinoembryonic Antigen (CEA)	●	●	●	●
Alpha Fetoprotein (AFP)	●	●	●	●
CA19-9 (Colon Cancer)	●	●	●	●
CA125 (Ovary Cancer)	●		●	
CA153 (Breast Cancer)	●		●	
Prostatic Specific Antigen (PSA)		●		●
Thyroid Function				
Thyroid Stimulating Hormone (TSH)	●	●	●	●
Thyroxine Free (Free T4)	●	●	●	●
Triiodothyronine Free (Free T3)	●	●	●	●
Inflammation				
Ferritin			●	●
Homocysteine			●	●
C-Reactive Protein High Sens	●	●	●	●
Gut Health				
Stool Examination			●	●
Urine Indican			●	●
Growth Hormone				
IGF1			●	●
IGFBP3			●	●
Vitamin				
Vitamin B12			●	●
Total Vitamin D			●	●
Body Composition InBody scan	●	●	●	●
Consultation -1 session included	●	●	●	●
Price THB	19,900	19,900	25,900	27,900

Instructions:

- Please do not consume food or drinks except plain water for at least 12 hours prior to beginning the program.
- If you are under treatment or taking medication for any medical or physical condition, please notify the nurse in advance.
- Recommend for Hormone testing It is advisable to complete this Blood test before 10.00 am when hormone levels are more representative.
- The time it takes for a blood draw usually depends upon the amount of blood needed.
- For while obtaining a small amount of blood for a sample may take 10-15 minutes.

Procedure:

Blood Draw - (Tuesday to Sunday starting 08:00 am)

Result:

General Checkup - 1 day

Executive Hormone check - 2 days

Wellbeing Panel - 3 days

Wellness Grand Executive - 5 days

The results will be done with a Doctor Consultation





• Food Intolerance Test - 222 Allergens

THB 14,900

Foods may possibly make you feel ill with reflecting itself in conditions such as: persistent skin problems, low mood, unexplained weight loss or poor attention span -- if any of these problems affect your quality of life, intolerance to certain foods might be to blame.

What is Food Intolerance?

A food intolerance is deferent from a food allergy. An allergy triggers an immune response where IgE antibodies immediately, upon consuming a particular food, are released causing mild to severe symptoms such as: difficulty breathing, an itchy rash or swelling, even anaphylactic shock. Whereas with food intolerance, the body creates a deferent type of antibody IgG non-immune response. These antibodies cause slower, more subtle reactions to the food, with symptoms not appearing until two to three days later.

Symptoms of Food Intolerance

- Nervous system symptoms such as migraines and mood imbalances
- Respiratory system symptoms such as asthma and sinusitis
- Muscular skeletal system symptoms such as joint pain and muscle pain
- Gastrointestinal system symptoms such as constipation, chronic diarrhea or unexpected weight loss
- Skin symptoms such as different types of rashes: urticarial or chronic inflammation acne

Our Clinic provide 8 Step to Food intolerance Free

- Carry out the food IgG test
- Review the results
- Understand what they mean
- Read the dietary support information
- Consider change in your diet following doctor consultation
- Carry out dietary changes
- Monitor improvements to your symptoms
- Consider re-introducing certain foods

Instructions: • If you are under treatment or taking medication for any medical or physical condition, please notify the nurse in advance.
 • The time it takes for a blood draw usually depends upon the amount of blood needed may takes about 10 minutes

Procedure: Blood Draw – (Tuesday to Sunday from 8.00 am -17.00 pm any time)

Result: Within 7 days with Doctor Consultation



ALLERGEN-SPECIFIC IMMUNOGLOBULIN E TEST

Are you allergic to something?

Allergies cannot be cured, so taking medication to control the symptoms is the primary treatment method. An even better approach, though, is knowing the cause of the allergies so you can avoid contact with the trigger. It doesn't matter what kind of symptoms the allergies cause—it may be irritation of the nose, skin, or eyes or it may be asthma or gastrointestinal problems.

What Is an Allergen-Specific Immunoglobulin E Test?

An allergen-specific immunoglobulin E (Ig E) test measures the levels of different Ig E antibodies. Antibodies (also called immunoglobulins) are proteins the immune system makes to recognize and get rid of germs. The blood usually has small amounts of Ig E antibodies. It has higher amounts if the body overreacts to allergens. Ig E antibodies are different depending on what they react to. An allergen-specific Ig E test can show what the body is reacting to.

Allergy symptoms are indicated as the following:

- Asthma;
- Rhinitis/rhinosinusitis/rhino-conjunctivitis/conjunctivitis;
- Eczema/atopic dermatitis (in the setting of selectively high clinical suspicion for underlying presence of Ig E hypersensitivity to specific allergens);
- Suspected food allergy (oral allergy syndrome, anaphylaxis/acute onset or exacerbation of urticaria or eczema that is temporally correlated with food ingestion)
- Hymenoptera venom allergy (systemic reactions immediately following insect sting)
- Chronic urticaria in rare selected cases which strongly suggest an allergen as potential trigger/aggravating factor;
- Less common disorders, such as eosinophilic esophagitis, gastroenteritis or allergic bronchopulmonary aspergillosis, where Ig E sensitization is one of the characteristics of its pathogenesis.



• Food (20) & Inhalation (20) specific Ig E

THB 4,900

This blood test will screen 20 food substances and 20 substances which are inhaled; as below list:

Inhalation profile 20 allergens

- Treemix1: Melaleuca, Au, Eucalyptus, Willow
- Australian pine
- Acacia
- Oil palm
- Grass mix1: Sweet vernal grass, Bermuda grass
- House dust mite mix1: Der p.,
- Cockroach, German
- Kapok
- Cat
- Dog
- Cage bird mix2: Parrot, lovebird, Budgerigar
- Guinea pig
- Mouse
- Rabbit
- Hamster
- Mold mixed: Cladosporium herbarium, Aspergillus fumigatus
- Penicillia mix2: Penicillium notatum, P. Brevicompactum
- Candida Albicans
- Aerobasidium pullulans
- Curvulari spicifera

Food profile 20 allergens

- Egg white
- Egg yolk
- Cow's milk
- Wheat flour
- Rice
- Sesame
- Soya bean
- Peanut
- Hazelnut
- Beef, cooked
- Pork, cooked
- Chicken
- Shellfish mix: Spiny Lobster, Oyster, Calm
- Fish mix: Codfish, Mackerels
- Crab
- Shrimp/Prawn
- Lobster
- Blue crab
- Chocolate
- Glutamate

Instructions:

- If you are under treatment or taking medication for any medical or physical condition, please notify the nurse in advance.
- The time it takes for a blood draw usually depends upon the amount of blood needed may takes about 10 minutes

Procedure: Blood Draw - (Tuesday to Sunday from 8.00 am -17.00 pm any time)

Result: Within 7 days with Doctor Consultation

WHAT ARE ALLERGIES IN CHILDREN



• 27 Common Pediatric Specific /Ig E

THB 3,900

Why your child may need an allergen-specific Ig E test.

An allergen-specific Ig E blood test may be used in addition to or instead of skin testing. An allergic reaction can happen anywhere in the body. This includes the skin, eyes, lining of the stomach, nose, sinuses, throat, and lungs. These are the places where immune system cells are found to fight off germs that are breathed in, swallowed, or come in contact with the skin.

Common allergens that can be detected through allergen-specific Ig E testing include:

- | | |
|--|------------------------------------|
| • Grass mix | • Hazelnut |
| • Carrot | • Potato |
| • Apple | • Mugworth |
| • Mites (Dermatophagoides Pteronyssinus) | • Mites (Dermatophagoides farinae) |
| • Cat | • Dog |
| • Horse | • C.herbarum |
| • A. fumigatus | • A.alternate |
| • Egg white | • Egg yolk |
| • Codfish | • Milk |
| • Alpha lactalbumin | • Beta lactoglobulin |
| • Casein | • BSA |
| • Wheat flour | • Rice |
| • Soya bean | • Peanut |
| • Birch | |

Instructions:

- If you are under treatment or taking medication for any medical or physical condition, please notify the nurse in advance.
- The time it takes for a blood draw usually depends upon the amount of blood needed may takes about 10 minutes

Procedure: Blood Draw - (Tuesday to Sunday from 8.00 am -17.00 pm any time)

Result: Within 5 days with Doctor Consultation



Why is gut health so important for our overall health and well-being?

The gastrointestinal tract (GI) is one of the largest interfaces between the outside world and the human internal environment. Your gut is the foundation of everything. It aids in the digestion of the foods you eat, absorbs nutrients, and uses it to fuel and maintain your body. So, if your gut is imbalanced and your immune system isn't working properly, your serotonin and hormones won't either, making it more challenging to stay healthy. Your gut is also where your body gets rid of metabolic waste and toxins. However, if you have an unhealthy gut, your body will struggle to rid itself of those toxins.

That can have detrimental effects on both mucosal and host health. Alterations in the gut microflora and its activities are now believed to be contributing factors to many chronic and degenerative diseases.

Symptoms can be listed as follow:

- Chronic fatigue
- Metabolic syndrome
- Obesity
- Atherosclerosis
- Irritable bowel syndrome Diarrhea, constipation, bloating.
- Inflammatory throughout the body, Autoimmune disease
- Joint pain, Rheumatoid arthritis and ankylosing spondylitis
- Brain fog

On a mission to help the human body obtain the nutrition it needs to survive and thrive, the gastrointestinal (GI) tract of the digestive system is regularly exposed to food particles, environmental toxicants, and potential pathogens. Maintaining a strong and healthy digestive system is key for promoting nutrient absorption, fostering a robust and diverse microbiome, and supporting general wellbeing and GI health.

GASTROINTESTINAL & GUT HEALTH

• **Urine Indican****THB 1,490**

The urinary Indican test is an accurate, simple and fast screening tool for the presence of dysbiosis (bacterial imbalance) in the gut.

What is Indican?

INDICAN is an indole compound (indoxyl) which produced from tryptophan degradation by intestinal bacteria – indole bacteria. It is a putrefaction product resulting from bacterial deconjugation of dietary tryptophan to indole in the small intestine. Indican levels are directly associated with bacterial activity in the intestines.

Elevated levels indicate intestinal toxemia or overgrowth of anaerobic bacteria, putrefaction of undigested food in the bowels, stomach disorder (constipation, malabsorption), intestinal disorders and pancreatic insufficiency.

Some causes of a positive Indican test could indicate:

- Dysbiosis
- Small intestinal bowel overgrowth of anaerobic bacteria (SIBO)
- Hypochlorhydria (insufficient stomach acid)
- Protein maldigestion (or high protein consumption)
- Intestinal mucosal permeability (due to damage from infection, toxic or reactive exposure, or nutritional deficiency)
- Coeliac disease
- Pancreatic insufficiency
- Malabsorption
- Bile duct obstruction or intra-hepatic biliary obstruction such as gall stones
- Inflammatory bowel disease
- Intestinal mucosal damage ('leaky gut')
- Nutritional deficiencies
- Irritable bowel syndrome
- Diverticulosis
- Intestinal infections
- Auto-immune disease
- Excessive use of antibiotics
- Liver dysfunction

INDICAN COLOR CHART:

- Instructions:
- Empty bladder before going to bed at night
 - Urinate first in the morning (midstream). The urine needs to detect for the most accurate result.
 - Collect urine about 20 ml.
 - If the customer wakes up during night collect half at night and half first morning urine
 - Then keep the urine container in the freezer until delivery.

Procedure: Collect first morning urine (Tuesday to Sunday from 8.00 am -17.00 pm)

Result: 1 day with Doctor Consultation

GASTROINTESTINAL & GUT HEALTH

• **Urine Organic Acid****THB 11,900**

It's a powerful test which determines more than 50 organic acids in the urine and focus on Metabolic intermediates produced in pathway of central energy production, detoxification, neuro-transmitter breakdown or intestinal microbial activity.

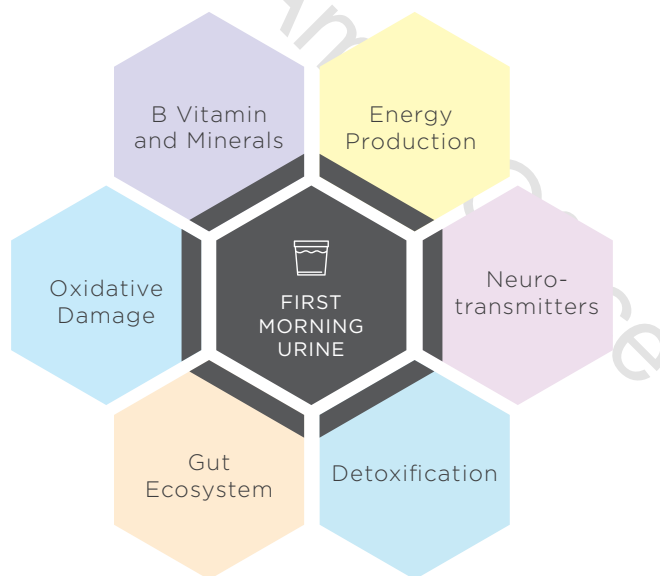
Marked accumulation of specific organic acids detected in urine often signals a metabolic inhibition or block. The metabolic block may be due to a nutrient deficiency, an inherited enzyme deficit. Toxic build-up or drug effect. Several of the biomarkers of intestinal bacteria or yeast overgrowth.

When should the Urine Organic acids Test be considered?

- Chronic fatigue
- Chronic illness
- GUT problem
- Stress
- Poor memory
- Nutritional problem

This urine organic Profile determines:

- Functional vitamins and minerals status, B vitamin
- Central energy Partway (Fatty acids metabolism, Carbohydrate metabolism, Amino acid metabolism)
- Neurotransmitter metabolites
- Flavonoids/Antioxidants
- Oxidative stress and Antioxidant need
- Toxic exposure and detoxification capacity
- Markers for bacterial and yeasts overgrowth (Dysbiosis)

**Instructions:**

- Decrease fluid intake to avoid excessive dilution of the urine
- For adult, restrict intake make sure that no more than 8 oz (240ml) of this consumed after 8 PM the evening prior to urine collection
- Empty bladder before going to bed at night Do not collect this urine
- Urinate first in the morning (midstream) The urine needs to detect the most accurate result.
- Collect about 20-30 ml.
- Then keep the urine container in the freezer until delivery.

Procedure:

Collect from urine

Result:

Within 30 days with Doctor Consultation

GASTROINTESTINAL & GUT HEALTH



The analysis is a functional test that provides an overview of the components of digestion, absorption intestinal function and microbial flora, as well as identifying pathogenic bacteria, parasites, and yeasts.

The analysis is a non-invasive test providing valuable information for patients and practitioners in terms of understanding the role of poor digestive function in disease states.

Poor digestive function and **imbalanced gut flora** may play a crucial role in the underlying cause of a number of health conditions.

Symptoms such as constipation, diarrhoea, flatulence, bloating, abdominal discomfort and bad breath are all indicative of poor gut function.

The CDSA level offers a comprehensive look at the overall health of the gastrointestinal (GI) tract. It helps identify inflammatory conditions such as IBD (Inflammatory Bowel Disease), food allergies and post-infectious irritable bowel syndrome (IBS).

Instructions:	<ul style="list-style-type: none">• Collect your stool sample in a completely clean (sterile) container for 2 boxes deliver right away for fresh sample• Or store the container in a fridge in sealed if you can't hand it in straight away
Procedure:	Collect from stool
Result:	Within 30 days with Doctor Consultation

Specimen Requirements:

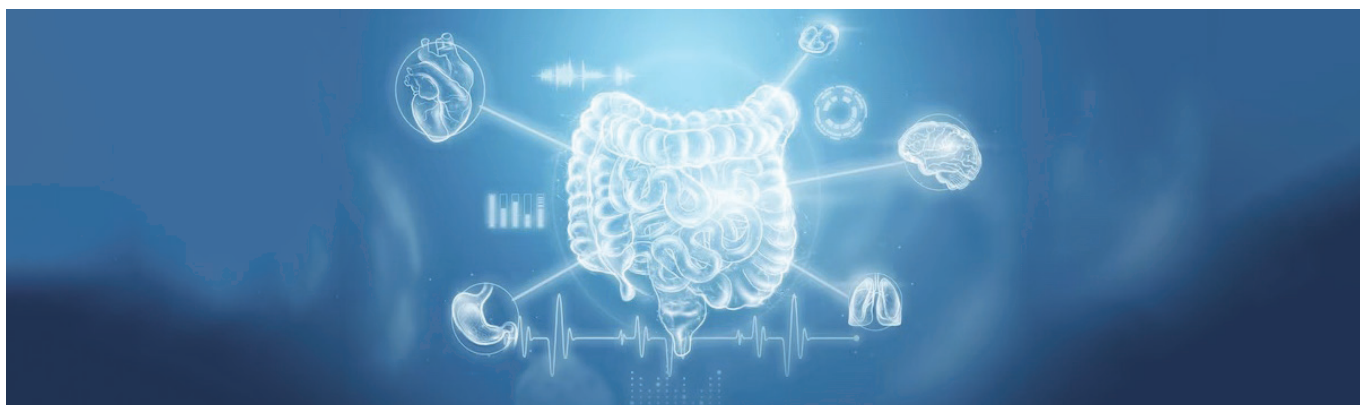
- CDSA Levels 1-3 require one stool collection
- CDSA Level 4 & Level 5 require stool collections on three consecutive days.

ANALYSIS & TEST

• Comprehensive Stool Diagnosis Level 1- 5

CDSA Tests	CDSA Level 1 12,900 ₪	CDSA Level 2 20,900 ₪	CDSA Level 3 22,500 ₪	CDSA Level 3+ 31,500 ₪	CDSA Level 4 29,900 ₪	CDSA Level 5 20,500 ₪
MACROSCOPY						
Stool colour & form	✓	✓	✓	✓	✓	✓
Mucous / Blood						
MICROSCOPY						
RBC, WBC, Food remnants, Fat globules, Starch	✓	✓	✓	✓	✓	✓
DIGESTIVE MARKERS						
Chymotrypsin		✓	✓	✓	✓	
Meat and Vege. fibres	✓	✓	✓	✓	✓	✓
SCFA, putrefactive		✓	✓	✓	✓	
Pancreatic elastase 1**			✓	✓	✓	
ABSORPTION MARKERS						
Triglycerides (stool)						
Long chain fatty acids		✓	✓	✓	✓	
Cholesterol (stool)						
Phospholipids						
METABOLIC MARKERS						
Beneficial SCFAs		✓	✓	✓	✓	
pH	✓	✓	✓	✓	✓	✓
Butyrate		✓	✓	✓	✓	
Acetate		✓	✓	✓	✓	
Propionate		✓	✓	✓	✓	
β-glucuronidase		✓	✓	✓	✓	
INFLAMMATION MARKERS						
Transglutaminase IgA**				✓		
Eosinophil Protein X				✓		
Calprotectin **				✓		
Bile acids - Lithocholic acid, Deoxycholic acid						
Lactoferrin, faecal						
TUMOUR/ULCER MARKERS						
M2 pyruvate kinase**				✓		
H. pylori antigen **				✓		
BACTERIOLOGY						
Bifidobacteria, Lactobacilli	✓	✓	✓	✓	✓	✓
E. coli, Enterococci						
Klebsiella, Pseudomonas	✓	✓	✓	✓	✓	✓
Campylobacter, Citrobacter, Yersinia, OTHER						
Candida, Yeasts	✓	✓	✓	✓	✓	✓
Antibiotic/Natural Sensitivities	✓	✓	✓	✓	✓	✓
PARASITOLOGY						
Cryptosporidium	✓	✓	✓	✓	✓ + EIA	✓ + EIA
Giardia lamblia						
Entamoeba histolytica						
Blastocystis hominis, OTHER	✓	✓	✓	✓	✓	✓

GASTROINTESTINAL & GUT HEALTH



• Complete Microbiome Mapping

THB 39,000

The Complete Microbiome Mapping Test was designed to assess a patient's microbiome from a single stool sample, with particular attention to microbes that cause disease or that disrupt normal microbial balance and contribute to perturbations in the GI flora and contribute to illness.

A Microbiome Mapping stool Test is the most accurate way to assess for overall gastrointestinal function, including:

- Healthy bacteria levels
- Presence of infections such as parasites, worms, pathogenic bacteria, yeast/fungi, viruses, H.pylori
- Gastrointestinal inflammatory issues
- pH
- Blood
- Infections
- Mucous
- White blood cells
- t-immune issues

You should consider having a microbiome mapping stool test if you suffer from:

- IBS
- cramping and gastrointestinal pain
- wind
- bloating
- flatulence
- constipation
- diarrhea
- heartburn
- reflux
- ulcers
- recurrent gut infections
- generalised poor health symptoms of fatigue, inflammatory problems, hormonal issues, mood disturbance and skin problems may all be caused by gastrointestinal system dysfunction, as a result of an imbalance of "good bacteria", infection with parasites, pathogenic bacteria or yeast/fungi or poor enzyme production and other issues.

What is the complete microbiome is screening for:

- General microscopic
- Short chain Fatty acid
- Parasites and worms
- Bacterial overgrowth result
- Bacterial pathogens
- Fungi and Yeast
- Viral pathogens
- Normal Bacteria gut flora

Instructions:	<ul style="list-style-type: none"> • Collect your stool sample in a completely clean (sterile) container for 2 boxes deliver right away for fresh sample • Or store the container in a fridge in sealed if you can't hand it in straight away
Procedure:	Collect from stool
Result:	Within 30 days with Doctor Consultation

ULTIMATE HORMONE CHECK



What do hormones do?

Hormones are the messengers of the body, constantly circulating and telling the body what it needs to do. They are secreted by the organs of the body's endocrine system and control many of the body's key functions, such as growth, repair, reproduction, digestion and metabolism. The body functions best if our hormones are in perfect balance. An imbalance of just one hormone can have serious effects on the body's overall function and well-being.

Symptoms Associated with Hormone Imbalances:

Symptoms of hormone imbalances can occur at any age and may include excessive weight fluctuations, irregular periods, low muscle mass, fatigue, difficulty concentrating, low libido, thinning skin and hair, mood changes (anxiety, sadness), hot flashes, poor sleep and osteopenia or osteoporosis.

Who should check their hormones in their body?

- Abdominal obesity
- Chronic acne
- Low sex drive
- Depression insomnia
- Waking up to use the bathroom at night

• **Basic Hormone Dried Urine**

THB 25,900

This test provides a focused overview of the hormonal cascade of both male hormones and female hormones. PMS Endometriosis, Hormonal cancers, Urinary Hormone Testing, Menopause PCOS, Osteoporosis Fertility issues, Adrenal stress, Uterine fibroids, Fibrocystic breasts, Fatigue, Insomnia Urine testing has the benefit over serum testing that it detects.

Basic hormones tested: Estradiol, Estrone, Estriol; Pregnanediol, Allopregnanolone; Testosterone, 5a-DHT, DHEA; Total Cortisol

• Advance Hormone Dried Urine**THB 38,900**

This test is ideal for a comprehensive overview of a patient's hormonal status or trying to find the underlying cause of a real complex hormone related issue. Reporting of this profile is practitioner and patient friendly in the sense that it provides detailed explanation and comments based on the test results as well as a symptomatology chart indicated by the patient and how these symptoms reflect the test results.

This test will measure and identify: Estrogens (x13), Progesterone (x7), Androgens (x6), Glucocorticoids (x4), free Cortisol (x4), free Cortisone (x4), and Melatonin (x4)

Common Conditions:

- Anxiety
- Headaches
- Poor concentration, 'brain fog'
- Energy levels
- Fatigue, lethargy
- Salt cravings
- Mild depression
- Sexual dysfunction
- Irregular sleeping patterns
- Thyroid dysfunction
- Blood Pressure
- Impaired Immune System
- Hot flushes
- Irregular menstruation
- Mood changes
- Brain fog
- Vaginal dryness
- Bone loss
- Dry skin
- Fatigue

- Instructions:
- On the day of collection; STRICTLY AVOID caffeine, alcohol and nicotine (smoking) unless you are told otherwise by your healthcare provider
 - On the day of collection minimize your fluid intake by half
 - Men & Non-Cycling or postmenopausal women: can collect on any day.
 - Premenopausal Women: Collect on day 21 of your regular cycle
 - Long/Short Cycles: Add the number of days you usually go beyond 28 days. Subtract, in a similar manner, if your cycles are shorter
 - (Example: collect on day 20 for a 26-day cycle).
 - Collect Urine 4 samples each time throughout the same day following the time schedule (Collect first sample Between 6-8 am, Collect sample 2 after 2hours from the first sample (10 am), Collect sample 3 between 4-6 pm, Collect sample 4 before bed 8-10 am)

Procedure: Collect from urine

Result: Within 30 days with Doctor Consultation

ADRENAL FATIGUE AND STRESS PROFILE



• Adreno Cortex & Stress Profile Basic Saliva

THB 14,900

Lifestyle, physical and psychological stresses put constant demands on the adrenal glands. If they get depleted adrenal fatigue or insufficiency may be experienced.

Symptoms include fatigue, hypotension, and lowered resistance to stress, salt cravings, hypoglycemia and lowered immunity.

Adrenal insufficiency frequently plays a role in conditions such as **chronic fatigue syndrome, allergies, rheumatoid arthritis, post-traumatic stress syndrome, anorexia** and most diseases for which corticosteroids are involved in the treatment.

Assessing cortisol, DHEA and other adrenal hormone levels may help to identify these patients and will assist effective therapy. The Adrenocortex test should be used as a general screening test as it plays such an important role for a healthy life.

Instructions:

- On the day of collection; STRICTLY AVOID caffeine, alcohol and nicotine (smoking) unless you are told otherwise by your healthcare provider.
- During the 2 hours prior to collection; DO NOT eat, brush or floss your teeth or use mouthwash. You may drink a little water during this time.
- Before collection; wash hands thoroughly with soap and water to avoid contamination.
- To collect the sample, rinse your mouth with a little water and wait 5 minutes before beginning to collect saliva in the tube. During the collection, do not cough, clear your throat or collect mucous from the back of your throat into the collection tube. Allow saliva to accumulate naturally in your mouth, and when an adequate amount is collected, transfer this to the saliva collection tube.
- FILL THE COLLECTION TUBE to the top with liquid saliva. Avoid foamy saliva or 'bubbles.
- Tap the tube with the fingernail or tap on a hard surface to reduce bubbles. Insufficient saliva samples cannot be processed.
- Collect saliva 6 tubes (Immediately upon rising ,30 minutes post awakening ,60 minutes post awakening, approximately 12 noon, at approximately 4pm, At approximately 9pm)
- Do not stop current hormone

Procedure:

Collect from saliva

Result:

Within 30 days with Doctor Consultation



MICRONUTRIENT AND VITAMIN PROFILE

Micronutrients Prevent Disease & Fight The Aging Process

Micronutrients are specific vitamins and minerals the body needs for optimal health. They are essential for a number of important functions including growth, development in children as well as maintenance in adults. Energy production, immune function, as well as skin, bone and brain health all need micronutrients.

Micronutrients (with the exception of vitamin D) cannot be synthesized by the body and must be received from food.

Symptoms associated with deficiencies may include:

fatigue, easily wounding or bleeding, discomfort, and numbness in the hands or feet, impaired immune system, low bone mass, poor collagen production, dry hair, brittle nails.

How your nutritional needs change with age

Your body goes through several changes as you age, many of which can alter your nutritional needs and increase the risk of deficiencies.

For example, your stomach produces less acid, which can reduce your body's absorption of micronutrients such as vitamins B6 and B12, iron, and calcium. For this reason, adults over 50 may need to take in more of these nutrients

Many older adults also experience reductions in bone mass, which is why calcium and vitamin D requirements are higher for those over age 70

Adults over age 65 may also need to consume larger amounts of protein to help prevent sarcopenia, or age-related muscle loss

Additionally, postmenopausal women need less iron because they lose less blood once they stop having regular periods.

MICRONUTRIENT & VITAMIN PROFILE

• **Micronutrient Profile + Vitamin D2/D3****THB 17,900**

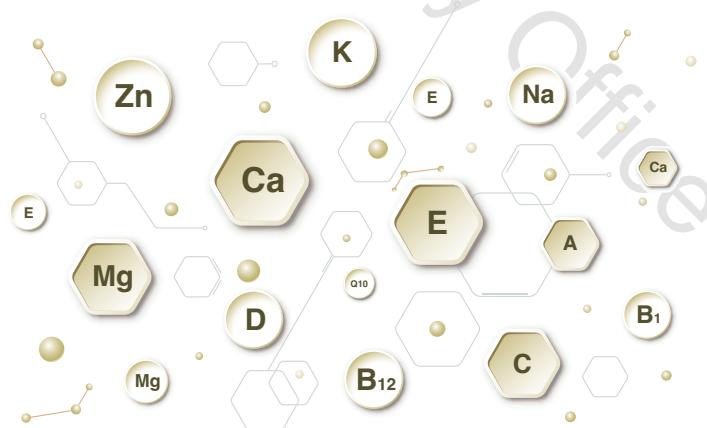
Micronutrients Prevent Disease & Fight the Aging Process. You will receive a detailed summary of your current micronutrient/anti-oxidant levels. If deficiencies are present recommendations may include supplements, medications or lifestyle alterations. A follow-up appointment will be scheduled to ensure symptom relief and correction of any deficiencies.

A micronutrient panel can assess your nutritional balance and identify deficiencies. Micronutrient testing offers the most accurate, scientifically proven method of assessing nutritional deficiencies. Micronutrient tests measure the function of 19 nutritional components including vitamins, antioxidants, minerals and amino acids within our white blood cells.

What results will you see? Micronutrient lab results include an overview page with all deficiencies listed, numeric and graphic reports easily identifying deficiencies and repletion and supplementation recommendations.

Package inclusions (19 parameters): water -soluble, Fat -soluble, microminerals, Trace elements, Trace minerals as below:

- | | | |
|---|---------------------|-------------------------|
| • Vitamin A | • Lycopene | • Zinc in blood |
| • Vitamin C | • Folate | • Vitamin B12 |
| • Vitamin E (<i>Gamma Tocopherol</i>) | • Chromium in blood | • Lutein + Zeaxanthin |
| • Vitamin E (<i>Alpha Tocopherol</i>) | • Copper in blood | • beta-Cryptoxanthin |
| • Beta Carotene | • Ferritin | • 25 OH Vitamin (D2) |
| • Alpha Carotene | • Magnesium | • 25 OH Vitamin (D3) |
| • Coenzyme Q10 | • Selenium in blood | • Total 25 OH Vitamin D |



- Instructions:
- Please do not consume food or drinks except plain water for at least 10 hours prior to beginning the program.
 - If you are under treatment or taking medication for any medical or physical condition, please notify the nurse in advance.
 - This program is for everyone who is over 15 years of age.
 - The time it takes for a blood draw usually depends upon the amount of blood needed may takes about 10 minutes

Procedure: Blood Draw – (Tuesday to Sunday from 8.00 am -17.00 pm any time)

Result: Within 7 days with Doctor Consultation

MICRONUTRIENT & VITAMIN PROFILE

• **Essential Fatty Acid****THB 13,900****The Benefits of Essential Fatty Acids**

Proper nutrition and weight loss are both hot topics in society today. It is important to be aware that weight loss does not necessarily translate into proper nutrition. Many individuals believe that in order to lose weight, one must eliminate fat from the diet. Unfortunately, this can be very harmful to the body as certain types of fats are critical to proper function of the body. These beneficial fats are known as Essential Fatty Acids (EFAs). They are essential because your body cannot produce them on its own so they must come from your diet. The two primary EFAs are known as linoleic acid (omega-6) and alpha-linolenic acid (omega-3).

These Essential Fatty Acids are necessary for the following processes:

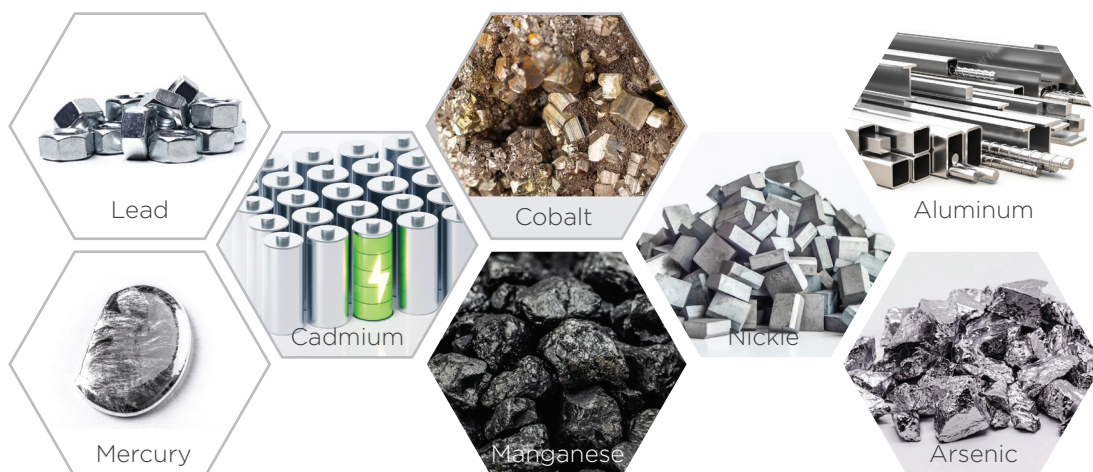
- Formation of healthy cell membranes
- Proper thyroid and adrenal activity
- Hormone production
- Regulation of blood pressure, liver function, immune and inflammatory responses
- Regulation of blood clotting: Omega-6 FAs encourage blood clot formation, whereas Omega-3 oil reduces clotting. The ideal is to achieve a balance between omega-6 and omega-3 FAs
- Crucial for the transport and breakdown of cholesterol, cardiovascular disease, hypertension, stroke
- Support healthy skin and hair
- Eye health
- Proper development and functioning of the brain and nervous system
- Diabetes
- Joint health
- Mental health
- Pre-natal and infant health
- Allergies, eczema, psoriasis
- Autoimmune disorders

Instructions:

- Please do not consume food or drinks except plain water for at least 10 hours prior to beginning the program.
- If you are under treatment or taking medication for any medical or physical condition, please notify the nurse in advance.
- This program is for everyone who is over 15 years of age.
- The time it takes for a blood draw usually depends upon the amount of blood needed may takes about 10 minutes

Procedure: Blood Draw – (Tuesday to Sunday from 8.00 am -17.00 pm any time)

Result: Within 30 days with Doctor Consultation



HEAVY METAL CHECK

Toxins are substances that may cause significant harm, cancer or even death to an individual. Common toxic substances are chemicals and heavy metals such as lead, cadmium, mercury, arsenic and aluminum. Everyone is exposed to environmental toxins on a daily basis. They are found in food, beauty products, household cleaners, tobacco products and even the air we breathe.

Wide-scale genetic testing has now shown that 50 percent of the world's population have a decreased ability to clear toxins due to genetic mutations. Over time, these toxins can accumulate in the body, causing damage to cells and chronic inflammation.

Symptoms Associated with Heavy Metal Toxin Accumulation:

Subtle signs of a toxin overload in the body include brain fog, confusion, memory loss, infertility, poor gut health, chronic fatigue, strong body odor, chemical sensitivities, physical aches and pains, as well as skin concerns such as acne or eczema.

How to Screen for Toxins:

Toxins only stay in the blood for a short time and then move into tissues for storage. In order to determine the total burden of toxic metals in the body we use a provoked urine test. This means we use chelating substances that can pull stored toxins out of tissues and organs into the urine so they can be measured.

During your initial consultation you will be tested for allergies to specific chelating agents. The following day appropriate chelating agents will be administered intravenously and you will be asked to collect your urine in a provided container for the next three hours. This urine sample will then be analyzed in our lab. Results are typically available within five days.

HEAVY METAL CHECK-UP

• Toxic Metal Profile in Urine

THB 3,900

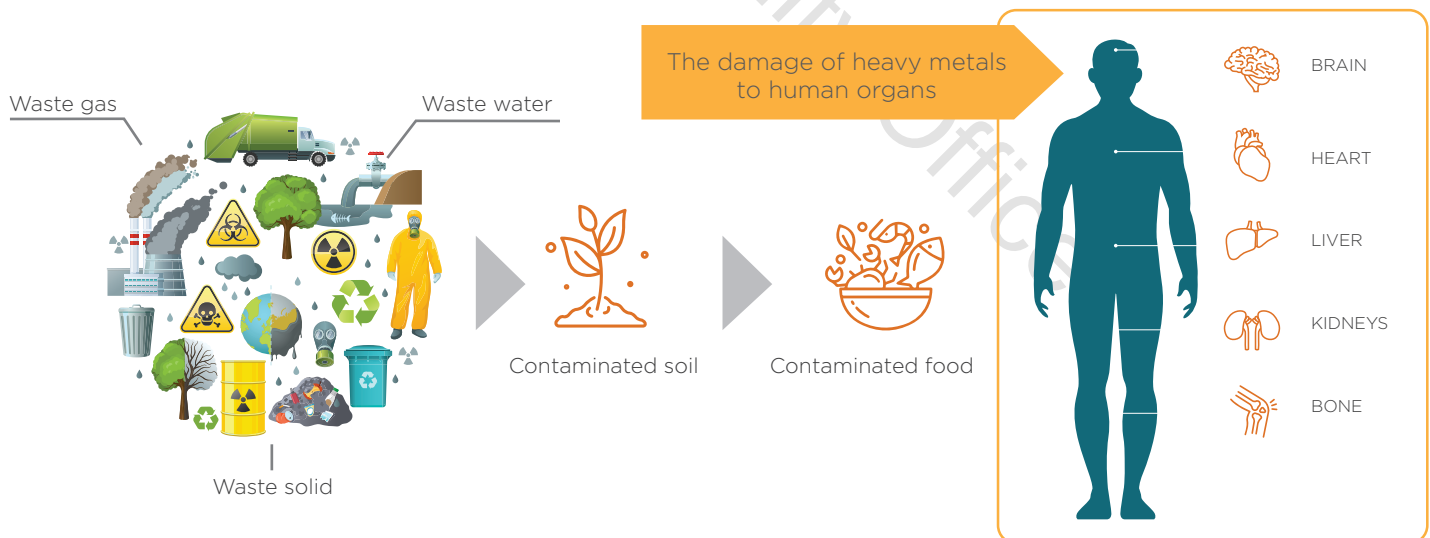
Urine and blood testing are both useful for assessing heavy metal exposure and toxicity, but each has its strengths and limitations. Urine testing measures both recent and ongoing exposure to heavy metals, and can provide information about the body's ability to eliminate metals. Urine testing can also detect some metals that may not show up in blood tests, such as aluminum and nickel.

Heavy metal test is a urine-based test to screen for 8 of the most common heavy metals known to accumulate and cause adverse health effects.

This test will show you the level of heavy metal Toxicity that you have so an appropriate advice can be made to remove:

- Lead
- Mercury
- Cadmium
- Manganese
- Chromium
- Cobalt
- Nickel
- Arsenic

HEAVY METALS ENTER ENVIRONMENT



- Instructions:
- If you have chronic disease or taking medication, please notify the nurse in advance.
 - The urine is collected within 4 hours of your arrival or followed by individual recommendations for proper detoxification. And record total volume of urine 24 hours

Procedure: Collect urine – (Tuesday to Sunday from 8.00 am -17.00 pm any time)

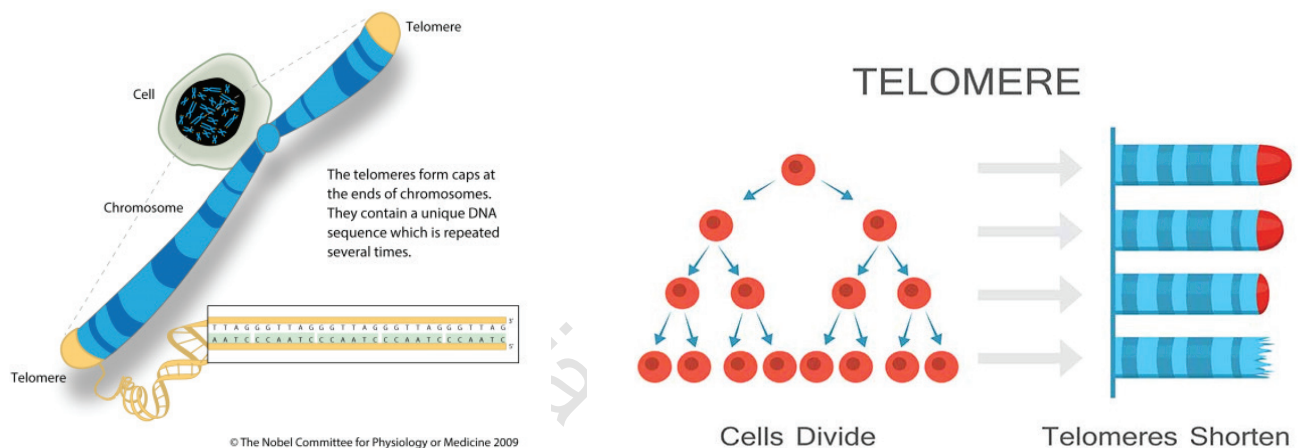
Result: Within 7 days with Doctor Consultation

• Telomere test

THB 9,900

What does Telomere Testing measure?

Telomeres are sections of genetic material at the end of each chromosome whose primary function is to prevent chromosomal “fraying” when a cell replicates. As a cell ages, its telomeres become shorter. Eventually, the telomeres become too short to allow cell replication, the cell stops dividing and will ultimately die—a normal biological process. Spectra Cell’s Telomere Test can determine the length of a patient’s telomeres in relation to the patient’s age.



How are the results reported?

The Patient Telomere Score is calculated based on the patient’s average telomere length in peripheral whole blood cells. This average is then compared to telomere lengths from a population sample in the same age range as the patient to determine the patient’s percentile score.

When should retesting be considered?

Testing should be done once per year to evaluate the rate and direction of telomere changes and make adjustments in nutrition, nutritional supplements, weight management, exercise and other lifestyle modifications known to influence telomere length.

- Instructions:
- If you are under treatment or taking medication for any medical or physical condition, please notify the nurse in advance.
 - The time it takes for a blood draw usually depends upon the amount of blood needed may takes about 10 minutes
- Procedure: Blood Draw – (Tuesday to Sunday from 8.00 am -17.00 pm any time)
- Result: Within 7 days with Doctor Consultation



DNA HEALTH PROGRAM

DNA Holds the Key to Our Health

Unlock the secrets to your health and address your future risks - Early risk awareness genetic testing.

With modern advancements in DNA testing, we now have the key that unlocks the secrets of our health - the ability to read and interpret risks associated with our genetic makeup. By testing our DNA, we are able to get a much clearer look into a person's potential risk for developing certain conditions in the future, allowing us to prevent the disease and mitigate the effects.

• DNA Premium Circle**THB 29,900**

Circle Premium has been specially designed for those who take health and wellness seriously. understand everything genetically about yourself-from our cancer and disease risk to discovering your optimal diet and nutrition, understand your family planning risk, The ultimate guide to personalized Health & nutrition and preventative lifestyle interventions.

- Gain insights into your unique genetic blueprint with our premium DNA test providing 500+ reports with 20 categories to help you properly plan for and take control of your future health. You will learn how DNA influences your personal qualities and abilities, as well as allowing you to:
- Understand your inherited risks for disease and cancers and take preventative action early on
- Discover your optimal diet and exercise requirements to effectively manage your weight loss or other fitness goals
- Get to know yourself better. Learn how DNA influences your personal qualities and abilities
- Improve the health of your skin by decoding your genetic skin information and selecting proper treatments according to your personal genetic details
- Manage stress and sleep better with actionable data on your stress tolerance, sleep quality and genetic chronotype
- Protect your family. Over 80% of children with inherited traits are born to parents who do not know they have the mutated gene.

Circle premium DNA will show the report as below

- Diet 15 reports
- Nutrition 20 reports
- Sport& fitness 18 reports
- Well-being 7 reports
- Skin 14 reports
- Stress & sleep 8 reports
- Pollution 5 reports
- Common health risks 8 reports
- Dementia & brain health 6 report
- Cancer screening 36 reports
- Family planning, disease risk 65 reports
- Drug response 107 reports
- Behavior traits
- Personality traits 5 reports
- Success traits 9 reports

Instructions:

- On the day of collection; STRICTLY AVOID caffeine, alcohol and nicotine (smoking) unless you are told otherwise by your healthcare provide
- DO NOT eat or drink, brush or floss your teeth or use mouthwash
- Rub the sponge along the lower gums in a back and forth motion 15 times on both sides.

Procedure: Saliva swab- (Tuesday to Sunday from 8.00 am - 10am)

Result: Within 45 - 60 days with Doctor Consultation



IV THERAPY

****BUY 5 GET 1 FREE**

• Hydration

45 mins

THB 1,690

Prevent Dehydration, Rehydrate and replenish electrolyte vitamin Hydration therapy to deliver supplements and nutrients. *It is commonly used for people who are weak, fatigue and has a lack and basic nutrients.*

• **Premium Energy Boost

60 mins

THB 1,990

It's mainly formulated to help for Nourishment and Regeneration from low energy and fatigue, but also helps mood disorder (e.g., depression, chronic sinus infections.) it is one of the most important vitamins for human life. It's necessary for making blood cells carry the oxygen throughout the body, and it helps you convert the food you eat into energy.

• Brain Boost

45 mins

THB 2,500

It's a mixture of Pure extracted protein. It's increasing the ability of the brain, activation Peptide fragments and neurotransmitters. Celebrolysin is used for medical treatment in cerebrovascular and stroke patients.

• **Premium Immune Booster

60 mins

THB 2,790

The formula contains high dose Vitamin C which is also an important component of cellular respiration and regeneration. It boots your immune system which It is necessary for normal functioning of nerves, cells, muscle, and bone.

Studies have shown that the pharmacological action of Vitamin C can attack various processes that cancerous cells use for their growth and development.

• **Skin Glow

60 mins

THB 2,690

This formula is water-soluble. This vitamin regulates physiological processes that are considered the building blocks of your health. It's used as a humectant that holds water leaving your skin supple and soft. It prevents water loss and retains moisture and keeping the skin barrier intact.

• **Ultimate Skin Advance

70 mins

THB 3,190

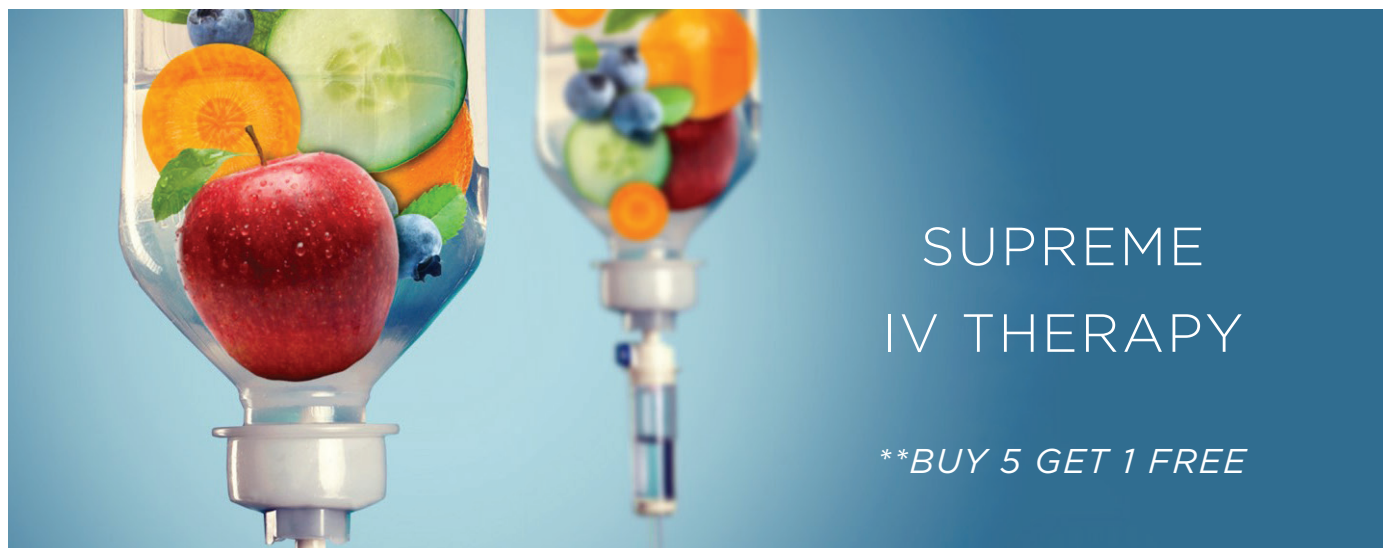
This formula is combining multiple high dose antioxidants and vitamins. It is the great way to improve your skin condition and cell health regeneration which also help reduce the risk of oxidative stress, which can cause many problems.

• Heavy Metal Detoxification

60-180 mins

THB 4,490

Benefiting from Heavy Metal Detoxification (Chelation therapy) is a highly effective treatment for clearing heavy metals excess calcium and artery clogging chemicals from the blood. Over time chelation has proven also enhances blood flow by reducing atherosclerosis or the narrowing and stiffening of arteries due to accumulation of plaque.



• ****Metabolic Booster**

120 mins THB 5,490

Metabolism Booster is the perfect weight loss / fat burning enhancement to your diet and increasing the energy. The unique combination of B vitamins, amino acids, and antioxidants boosts your metabolism to burn fat. It's contained vitamin which convert food into fuel.

• ****LIVER DETOX / HANGOVER**

120 mins THB 6,490

Consists of Amino Acid and vitamin which enhance liver function by increasing liver efficiency to detoxify the body and change fat soluble toxin to water soluble toxin.

ALA helps with the treatment of liver damage, diabetics, cancer and other disease.

• **CARDIO VASCULAR SUPPORT**

120 mins THB 14,900

It is shown to improve cardiovascular and respiratory health, especially in individuals exposed to reduced oxygen environments.

PC can be used to reduce bad cholesterol (LDL) and increase good cholesterol (HDL); therefore, improving the LDL: HDL ratio.

• **ANTI- INFLAMMATORY**

120 mins THB 15,000

This formula is natural and powerful. It can help in the management of oxidative and inflammation in the body including auto-immune disease, metabolic syndrome, leaky gut, IBS, pain in the body arthritis, anxiety, and hyperlipidemia.

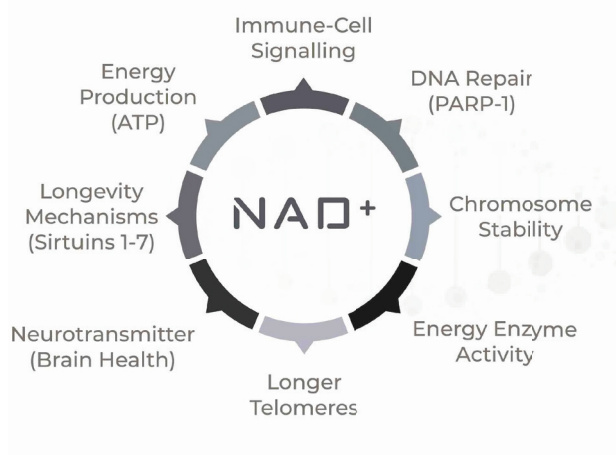
4session 40,000

4session 39,900



VITAMIN INJECTION

• Vitamin D 300,000 IU D-Up 300000 IU Injection contains Vitamin D3, which is essential for the proper growth and development of your body. It helps in the absorption of calcium and phosphates from your bowel, which keeps your bones and teeth healthy.	10 mins	THB 1,490
• L-carnitine Deficiencies in L-carnitine can lead to tiredness and muscular weaknesses, which may affect the quality and frequency of workouts. As a boost to a healthy eating and exercise plan, our L-Carnitine IV therapy infusions encourage the body to convert excess stored fat into energy, resulting in a slimmer physique and higher endurance levels.	20 mins	THB 1,490
• Vitamin B12 Cyano/Methyl Vitamin B12 is a water-soluble vitamin that plays an important role in brain function and red blood cell production. It plays a vital role in brain function and the production of DNA and red blood cells.	5 mins / 30 mins	THB 500 / 1,490
• Iron IV Iron is one of the minerals in the human body. If you do not have enough iron, your body cannot make hemoglobin, and you may develop anemia. If a person does not have enough hemoglobin, they can feel tired, have a rapid heartbeat, and may even have difficulty breathing. An iron infusion may be used for someone with an iron deficiency when supplements do not work.	45 mins	THB 1,490
• Glutathione "The Guardian of The Cell". This master anti-oxidant IV push shot increases energy levels whilst slowing down the aging process and improving skin.	20 mins	THB 1,900
• Alphalipoic Acid Alpha lipoic acid is a powerful antioxidant recognized for its many benefits including better health, beauty and weight loss. ALA is found in every cell of your body but stress, disease, medications, toxins and aging can lead to reduced levels of alpha lipoic acid. ALA is also unique because it helps your body restore or regenerate levels of vitamin C, vitamin E and glutathione, the mother of all antioxidants.	60 mins	THB 1,990
• Growth Hormone		THB 12,000



NAD+ IV THERAPY

What is NAD IV Therapy?

NAD is a coenzyme naturally found in every cell in the body that can maintain DNA integrity and reverse cellular damage. NAD levels naturally decline due to:

- Aging,
- Stress,
- Environmental factors.

Replenishing these levels may provide a wide range of anti-aging benefits.

NAD IV therapy delivers NAD+ and a blend of complimentary vitamins (B-Complex Vitamins, Vitamin B12, Vitamin C, Magnesium, Glutathione) directly into the bloodstream, making it the most efficient and effective way to restore natural levels of this coenzyme.

How does NAD work?

Studies have shown promising results that a coenzyme known as NAD can:

- Slow down the aging process,
- Improve mental clarity,
- Restore neurologic function,
- Improve the body's overall health.

One of its most significant roles within the body is in oxidation-reduction (redox) reactions. These reactions are a part of the metabolic system and converts food into the energy the body needs to function properly.

Among other functions, NAD plays a significant role in anti-aging. NAD works on mitochondria and increases the length of telomeres, which are the protective caps located at the ends of chromosomes that become shorter as the body ages. NAD increases the activity of SIRT1 and PARP 1 proteins, which are linked with a slower rate of aging and influencing DNA repair respectively

• NAD+ (STARTING 100mg.)	60 mins	THB 5,000
• Intro course 300mg		THB 14,900
• Immune / Post COVID 600 mg		THB 29,000
• Brain Health 1,200 mg		THB 59,000
• Anti-aging 1,500 mg		THB 69,000



Hormones are an important part of your body's messenger system. These chemicals send signals to almost every part of your body. They control things like your mood, growth, and even body hair.

Bioidentical hormones are man-made. They're designed so your body uses them in the same way it does your own hormones. Bioidentical hormones can be very helpful for people who suffer from a hormonal imbalance or who might not make enough hormones naturally.

What are Bioidentical Hormones?

Hormones are chemicals that are made by your endocrine glands. The glands release hormones into your bloodstream to be carried to the appropriate body part. Hormones control quite a few functions in your body such as:

- Metabolism
- Reproduction
- Growth
- Sexual function

It's difficult for you to function properly when your hormones are out of balance. A hormone imbalance can cause weight gain or mood swings that affect your day-to-day life. Taking hormones can help people whose bodies don't make enough of a certain hormone, or whose hormone levels are unbalanced.

Bioidentical hormones are just one type of man-made hormones available. Of all the hormones out there, the bioidentical type is the closest to the real thing. These hormones are chemically identical to the ones your body makes, so you can absorb them easily. Bioidentical hormones are made in a laboratory and can come in different forms.

Female hormone

- Bioidentical hormone cream
- Oral hormone

Male hormone

- Testosterone injection (250mg.) **THB 1,490**
- Testosterone injection (1,000mg.) **THB 9,900**
- Bioidentical hormone cream/gel

*Customized Hormone individual Follow hormone test *



What are Peptides?

Peptides are the building blocks of proteins and are composed of amino acids that work to regulate a variety of biological functions and processes. These naturally occurring peptides act as signaling molecules within the body and instruct other cells and molecules on what functions to perform.

There are over 7,000 known peptides within the human body and though some may be similar each is responsible for facilitating a different response and action within the body. Some common functions of peptides include providing pain relief, aiding in soft tissue repair, accelerating healing processes, promoting weight loss and lean muscle gain, reversing symptoms of sexual dysfunction, and improving hormone production and cognitive function.

What is Peptide Therapy?

Though our bodies naturally produce peptides, the production of peptides can vary greatly by individual and as we age, the number and quality of peptides within the body may decline.

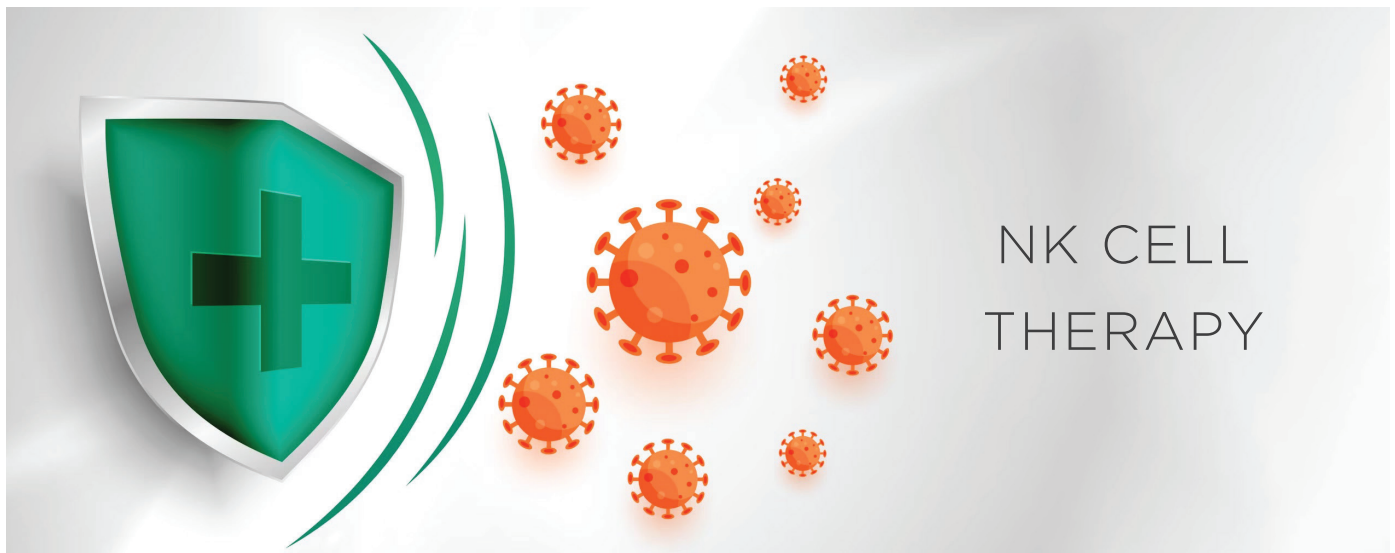
Peptide therapy refers to restoring the number of peptides to stimulate cellular regrowth systems within the body as a treatment option for specific conditions. Peptides are typically administered directly into the bloodstream through subcutaneous injections, but may also be applied as topical creams, nasal sprays, or oral forms.

This form of treatment can be entirely customized to the patient's unique needs and goals. By using this targeted method, we can produce a specific reaction in the body and treat a variety of conditions.

WHAT ARE THE BENEFITS OF PEPTIDE THERAPY?

As stated above, peptide therapy is an extremely unique treatment option that can be used to treat a variety of concerns. Some of the benefits of peptide therapy can include but are not limited to the following:

- Accelerate healing processes
- Boost hormone levels
- Build muscle mass
- Decrease joint and muscle pain
- Enhance cognitive function and memory
- Help reverse symptoms of sexual dysfunction
- Improve sleep quality
- Increase levels of energy, stamina, and strength
- Lower blood pressure
- Promote healthy immune function
- Reduce signs of aging
- Stimulate hair growth



What are NK Cells?

Natural Killer Cells, also known as NK cells, are a type of white blood cells (lymphocytes) and a crucial component of innate immune system, representing only 5-10% of circulating lymphocytes. NK cells represent the first line of defense against the virus-infected and malignantly transformed cells without any priming antigen stimulation or prior activation. Additionally, NK cells also produce a wide variety of cytokines that can modulate the function of other innate and adaptive immune cells.

The Roles of NK Cells in the Immune System:

NK cells can detect and destroy infected or abnormal cells such as cancer cells based on signals from various cell surface receptors and without any specific antigens.

NK cells play an important role in the immune system by producing several cytokines to influence various other cell types such as Dendritic cells, T-cells, and B-cells, to enhance the immune response.

NK Cell Mechanism:

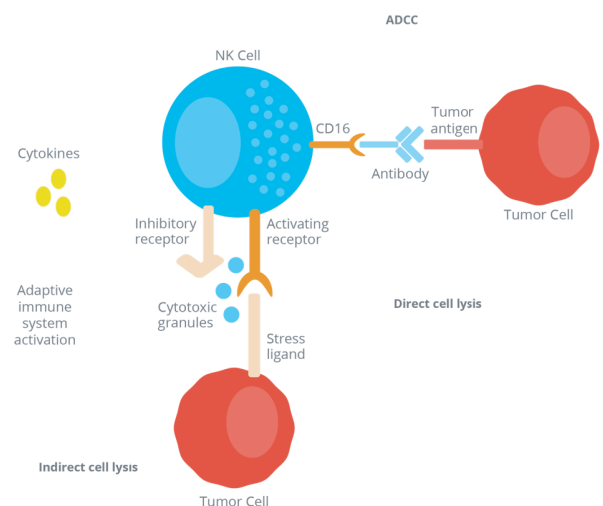
The regulation of NK cell function is mediated by surface receptors including activating receptors and inhibitory receptors. Whether or not the NK cells kill the infected cells depends on a balance of signals from activating receptors and inhibitory receptors on the NK cell surface.

Normally, NK cells can discriminate between normal host cells and infected cells by recognition of MHC class I molecules. Therefore, NK cells do not kill normal cells because they express adequate amount of MHC class I molecules on their surface. On the other hand, reduced levels of MHC class I expression is a frequent event in cancer cells.

NK Cell Activity:

After NK cells detect infected or abnormal cells, they kill target tumor cells through several mechanisms as follows.

1. Direct elimination of target cells by releasing of cytotoxic granules containing granzymes and perforins.
2. Indirect elimination of target cells by secreting cytokines and chemokines secretion such as Pro-inflammatory cytokines upon target cell recognition
3. Antibody Dependent Cellular Cytotoxicity (ADCC) mechanism



- NK Cell Activity
- NK Cell Treatment

THB 9,900

THB 179,000/Treatment



STEM CELL THERAPY

For Cosmetics:

Our focus is improving overall skin quality and removing color irregularities that ageing, exposure to the sun, and environment can cause. Stem cells are able to restore the youthful contour and shape of your face. A stem cell facelift is a complete facial rejuvenation procedure that does not involve surgery. It avoids any incisions and, because of how potent stem cells can be, reduces the need for other maintenance procedures like botulinum toxin or cosmetic filler injections.

For Anti-aging:

The Stem Cell Therapy can potentially enhance the cell and its regeneration, as well as maintain the cellular functions, specialize the cells that are damaged or lost. Moreover, the Stem Cell therapy can reduce the inflammation and stimulate the cell renewal.

For healing and recovery:

Using hematopoietic stem cells (from cord blood) and mesenchymal stem cells (from placenta, cord tissue and adipose tissue), we offer a range of treatments to fit your medical needs. These stem cells offer potentially life-saving treatment options for people traditional medicine cannot assist. HSCs are used for treating disorders of the circulatory and immune systems because they specialize into blood cells. They are most commonly used to treat a range of anemias, cancers and congenital immune system issues. There is strong evidence to show that MSCs are ideal treatments for incurable disorders like multiple sclerosis, systemic lupus erythematosus, Parkinson's disease, diabetes, and cystic fibrosis... among others.

Restore your body's youthful strength:

Stem cells have the ability to reproduce and transform into all kinds of living cells in our body – replenishing damaged organs with healthy cells. These stem cells can also accelerate growth of nearby cells combatting slowed-down cellular repair for an added benefit. Using intravenous or intra-articular injections, stem cells can be used for anti-ageing treatments and can improve your organ function to help with chronic illnesses like diabetes or cirrhosis. Overall, these rejuvenate therapies fight the ageing process – leaving your body healthier and boosting longevity.

- Stem cell 1 million Cells
- Stem cell 5 million Cells

THB 19,900/Treatment
THB 89,900/Treatment



Micronutrients for a Healthier You:

Nutrients are essential elements that help the body grow and develop. As our bodies cannot produce their own nutrients, these have to come from food and supplements. Nutrients can be divided into two categories: macronutrients and micronutrients.

Macronutrients: encompass carbohydrates, proteins, and fats. The body needs macronutrients in large amounts in order to survive.

Micronutrients: on the other hand, consist of vitamins and minerals. The biggest difference between macro and micronutrients is that our body does not necessarily need micronutrients to survive. However, while macronutrients ensure our survival, micronutrients ensure our overall health and wellbeing.

Vitamins: are organic and can be broken down by elements such as heat, air, or acid, which means that the available vitamins in food may be destroyed or degraded during the preparation/cooking process. As such, it is not easy to obtain all the micronutrients that your body needs from just food. As a solution, people often turn to supplement to meet all their daily nutrition requirements.

Eating a balanced diet, exercising and taking a multivitamin is simply not enough. Each person's body is unique in its own way. Due to the complexity of the human body, an individualized healthcare approach is a better way to get optimal results.

STAY WELL Clinic & Physio: we personalize and customize supplements helps improving your quality of life.

- You will know exactly what your body needs and take only what you need and nothing you don't
- Your supplements will come packaged in convenient daily packets to make it very easy and convenient to stay on track
- Wellness Pharmacy laboratory will compound your custom formulation in our specialized I lab